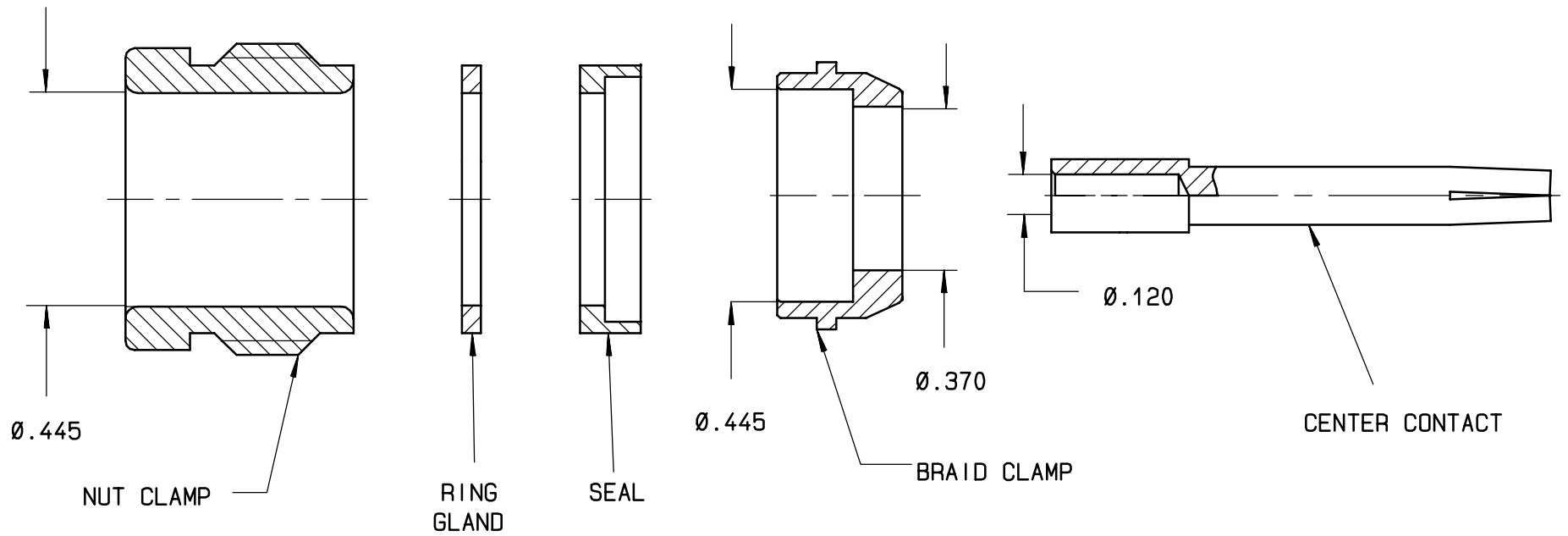
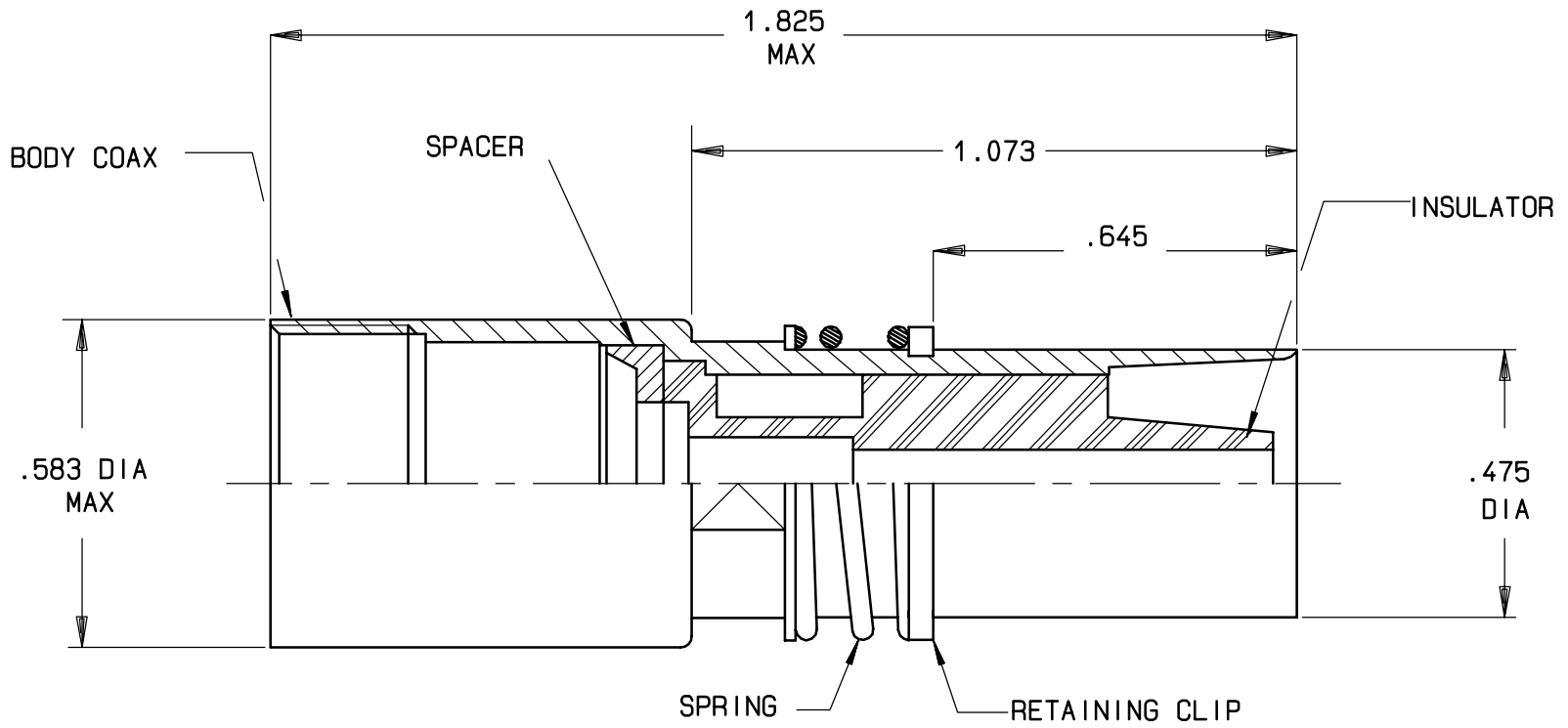


Series
NSX

T-CAS SIZE 1 RF COAXIAL CONTACT
KIT FOR RG 225 AND RG 393 CABLES

Issue:
07 JUNE 99

Page
1 / 3



MATERIAL AND FINISH :

- CONTACT BODY : BRASS-GOLD OVER NICKEL UNDERPLATE
- INSULATOR : PTFE
- SPACER : BRASS-GOLD OVER NICKEL UNDERPLATE
- SPRING, WASHER : STAINLESS STEEL
- C CLIP : STEEL-NICKELED
- CLAMP NUT, RING GLAND AND BRAID CLAMP : BRASS-GOLD OVER NICKEL UNDERPLATE
- CENTER CONTACT : BERYLLIUM COPPER-GOLD OVER NICKEL UNDERPLATE
- SEAL : ELASTOMER SILICONE

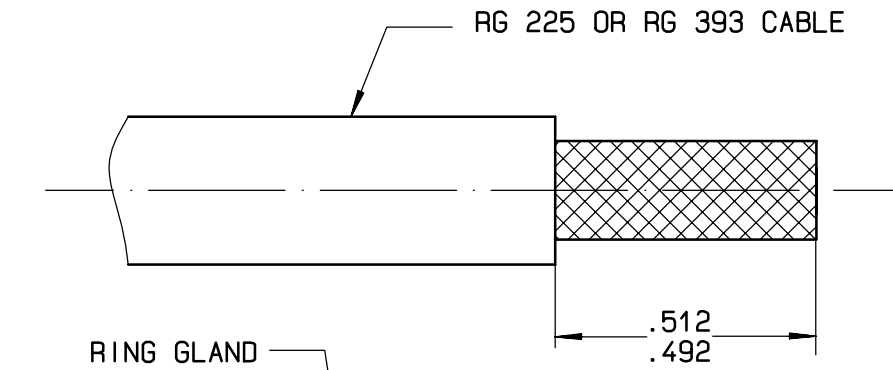
This information is given as an indication. In the continual goal to improve our products, we reserve the right to make any modifications judged necessary.

4112_9311

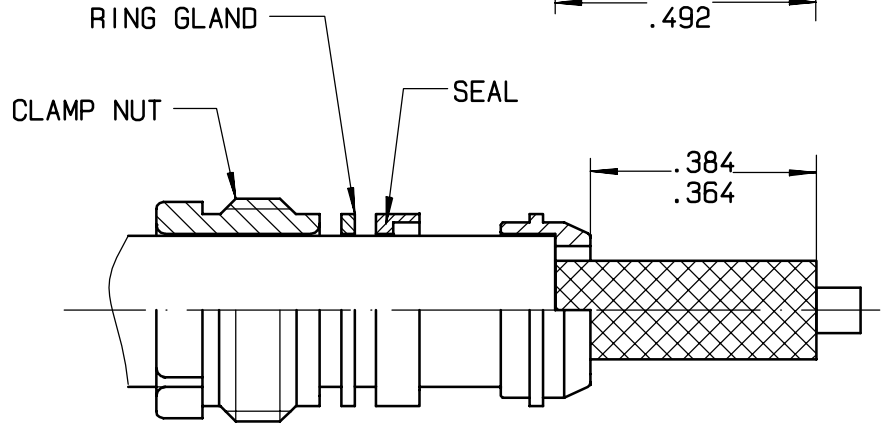
Issue	Revisions	Name	Approved
06/07/99	UPDATED REPRESENTATION	D.FERRER	
10/06/96	SHEET 3 ADDED: MOUNTING COAX IN C4 PLATES	K.PECHEUX	VALGRESY
16/04/96	Ø .440 BECOME Ø .445	K.PECHEUX	VALGRESY
06/02/96	OUTER CONTACT SUB-ASSEMBLY REDRAWN. RG 393 CABLE ADDED	K.PECHEUX	VALGRESY



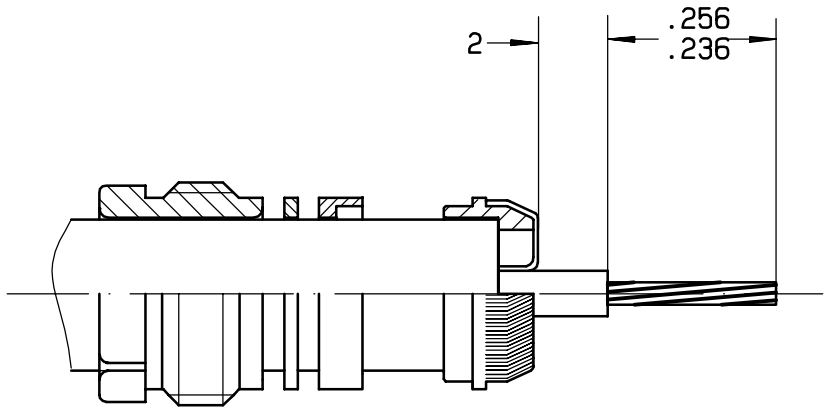
WIRING INSTRUCTIONS



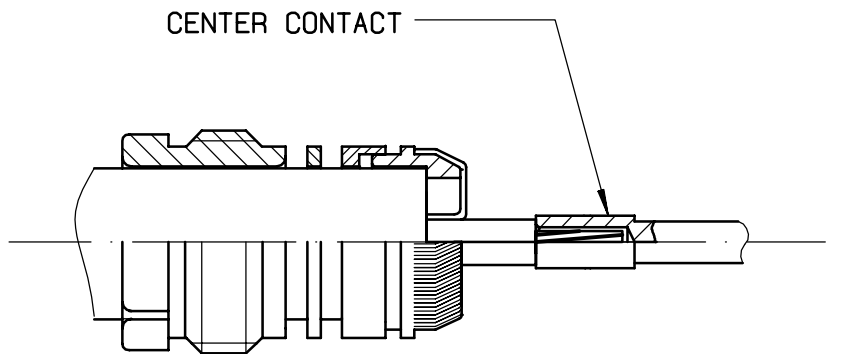
STEP 1
STRIP THE CABLE AT DIMENSION SHOWN



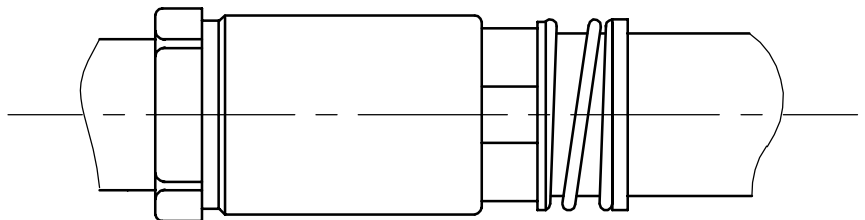
STEP 2
SLIDE CLAMP NUT, RING GLAND, SEAL AND BRAID CLAMP OVER CABLE.
COMB BRAID UNTIL ALL STRANDS ARE STRAIGHT.
CUT BRAID TO DIMENSION SHOWN.



STEP 3
FOLD BACK BRAID OVER BRAID CLAMP.
STRIP AND TRIM INNER CONDUCTOR AT DIMENSION SHOWN.



STEP 4
PLACE CENTER CONTACT OVER INNER CONDUCTOR UNTIL STOPS AGAINST DIELECTRIC.
SOLDER CENTER CONTACT.



STEP 5
INTRODUCE CENTER CONTACT/CABLE ASSEMBLY INTO OUTER CONTACT.
SLIDE SEAL AND RING GLAND INTO OUTER CONTACT
SLIDE CLAMP NUT IN PLACE AND TIGHTEN WITH 45 TO 55 INCH.POUND (52 to 63 cm.daN) TORQUE.

This information is given as an indication. In the continual goal to improve our products, we reserve the right to make any modifications judged necessary.

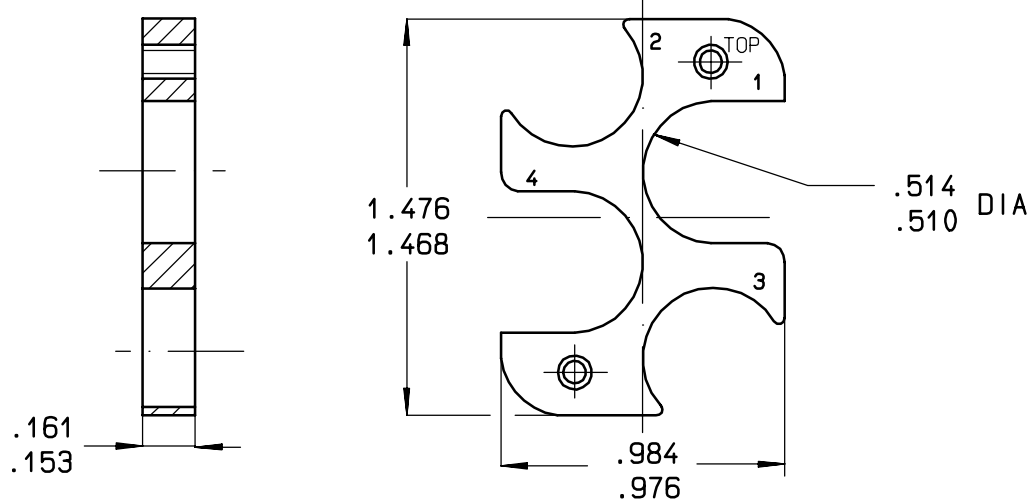
MOUNTING OF THE SIZE 1 COAX CONTACTS IN THE CONNECTOR :

DESCRIPTION

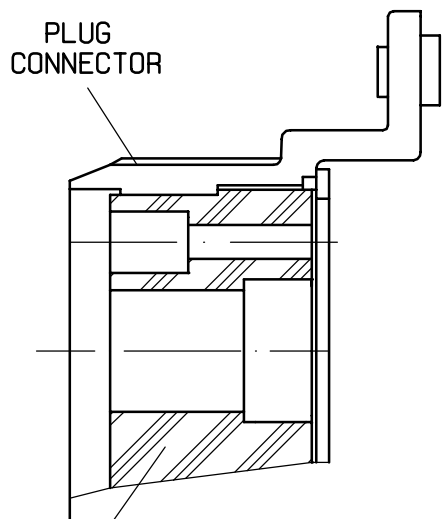
THE C4 INSERT IS COMPOSED OF:

- 1 FRONT PLATE
- 1 REAR PLATE
- THE INSERT RETENTION PLATES

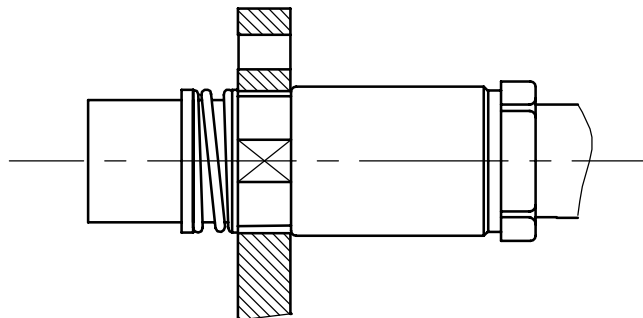
DESIGN OF REAR PLATE:



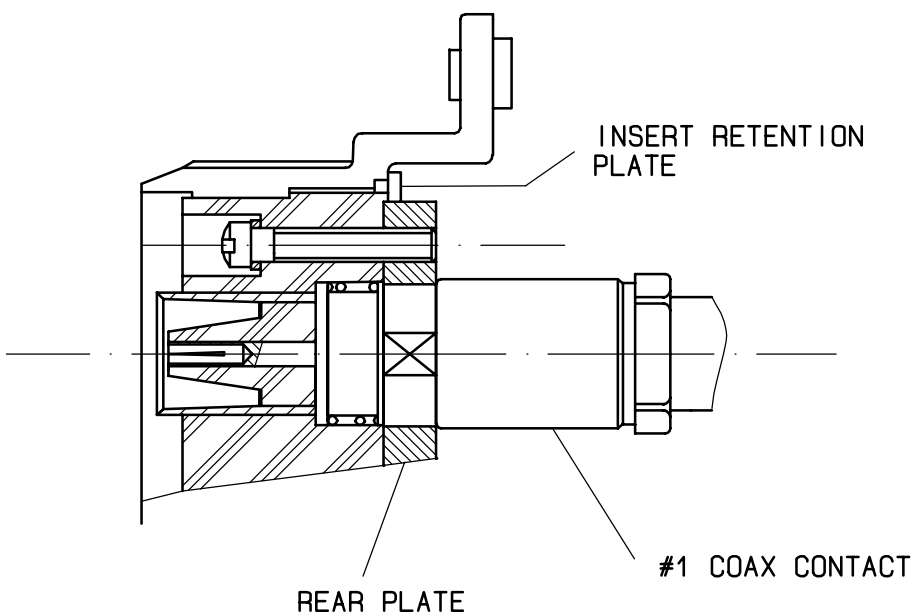
MOUNTING



INSERT THE FRONT PLATE IN THE CONNECTOR.
THEN, FIX IT WITH THE INSERT RETENTION
PLATES.



LOCATE THE FOUR COAXIAL CONTACTS IN THE
CORRESPONDING HOLES OF REAR PLATE
(THE REMOVAL OF CIRCLIPS, WASHER AND SPRING
IS NOT NECESSARY).



THEN, THE ASSEMBLY (CONTACTS AND REAR PLATE)
IS INSERTED IN THE CONNECTOR AND
MAINTAINED BY THE 2 ATTACHMENT SCREWS.

This information is given as an indication. In the continual goal to improve our products, we reserve the right to make any modifications judged necessary.